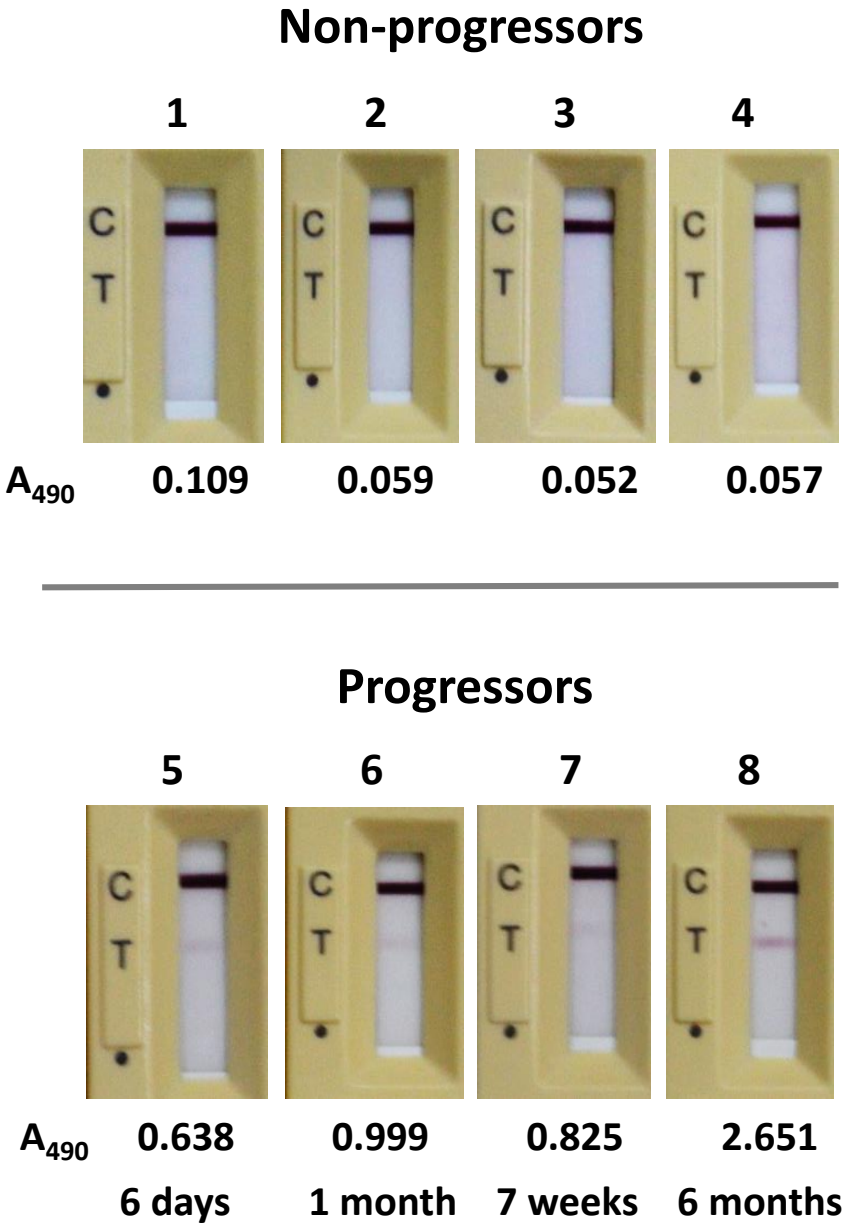
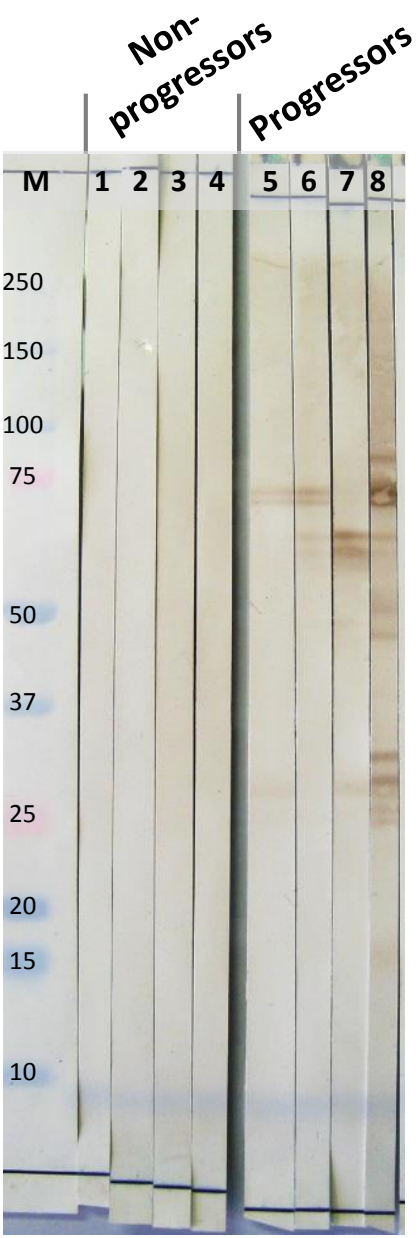


A



B



**Figure S7. Elevated IgG1 in asymptomatic individuals was predictive of progression to symptomatic VL.** 1-4, non-progressors: 5-8, progressors. (A) VL Sero K-SeT RDTs with corresponding IgG1 ELISA  $A_{490}$  readings below each RDT (ELISA cutoff = 0.128). C: control line; T: Test line. Time until active VL after sampling is given below the progressors, (B) western blots detecting IgG1 anti *L. donovani* for the same individuals. M: Molecular weight marker with kDa marked.